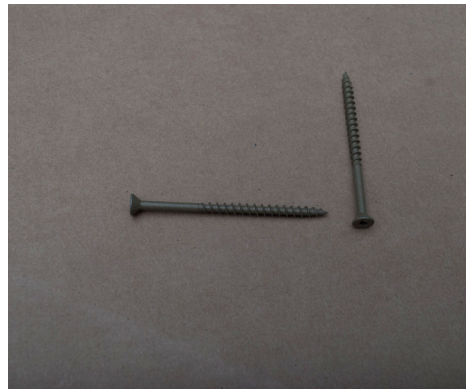


# Gazebo Screen Assembly Manual

## Parts



Screen Panels



2 ½" Screws



2" Screws



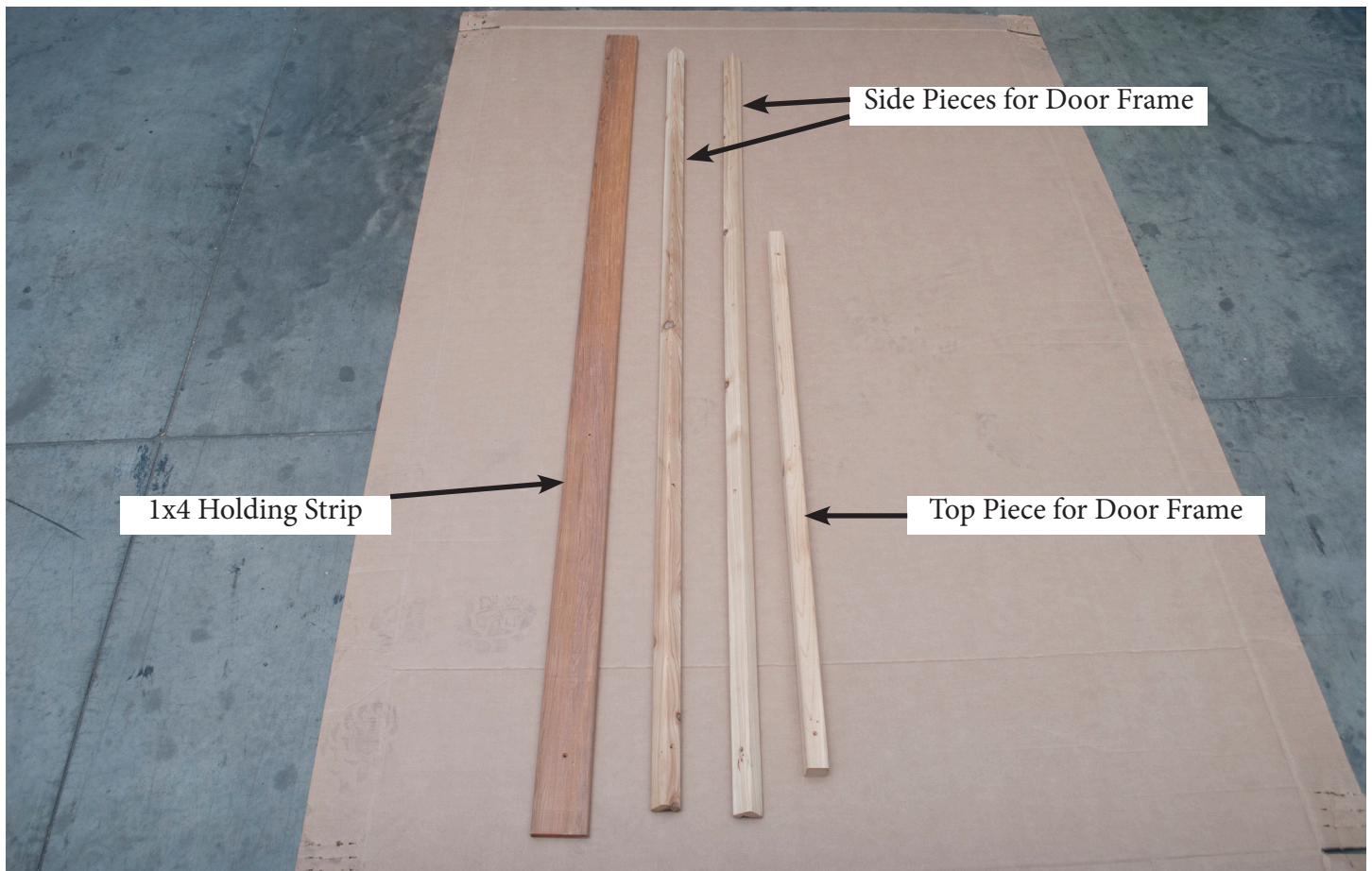
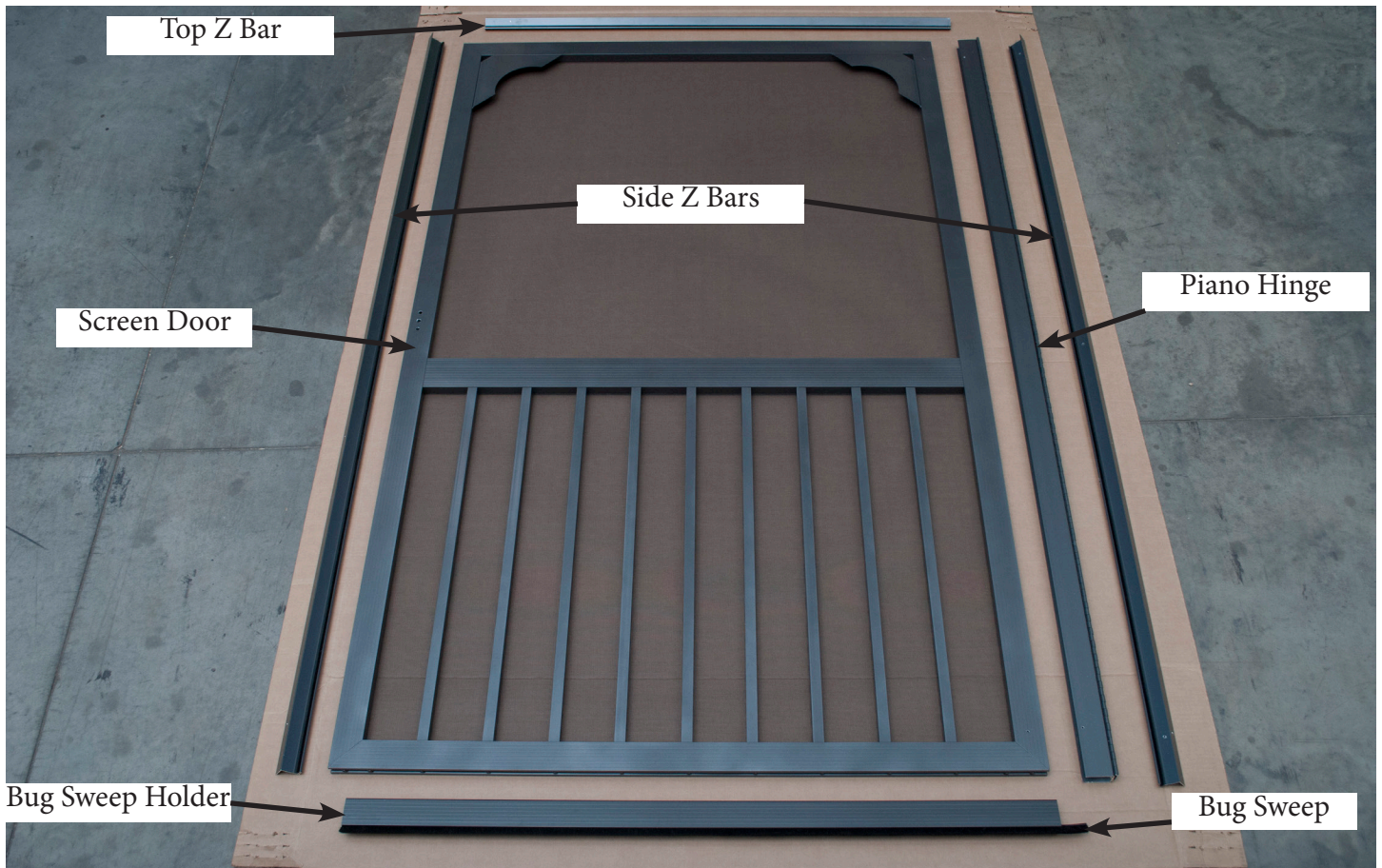
1x6 For Top of Door. (One Piece  
is Cut on Angle)



Door Latch with 1" Bronze and  
½" Bronze Screws



# Parts





Step # 1



Locate the Screen Panels. Place on the first section as shown. Ensure it is in against the post. And also in between the rafters at the top.

Step # 2



Place the Screen Panel between the rafters at the top.

Step # 3



Install the second Screen Panel on the next section, as shown in step 1 & 2.

Step # 4



Locate the 1x4 Holding Strip. Place onto the post between the Screen Panels. It will overlap onto the Screen Panel.

Step # 5



Fasten the 1x4 Holding Strip to the post with one (1) 2" Screw into each pre-drilled hole.

Step # 6



Fasten with a total of four (4) 2" Screws through pre-drilled holes.



Step # 7



Follow steps 1-6, to install the remaining Screen Panels.

Step # 8



Locate the 1x6 with the Angle Cut.

Step # 9



Place the 1x6 up between the two rafters.

Step # 10



Hold up against the Tongue & Groove. Fasten at each end with one (1) 2" Screw through pre-drilled hole.

Step # 11



Place the second 1x6 Piece below the first one.

Step # 12



Be sure to push the second piece tight against the first piece.



Step # 13



Fasten at each end with one (1) 2" Screw through pre-drilled hole.

Step # 14



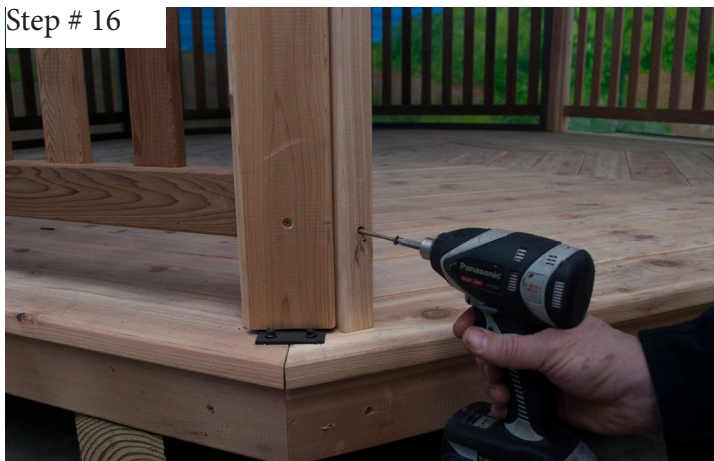
Locate the Side Piece for Door Frame.

Step # 15



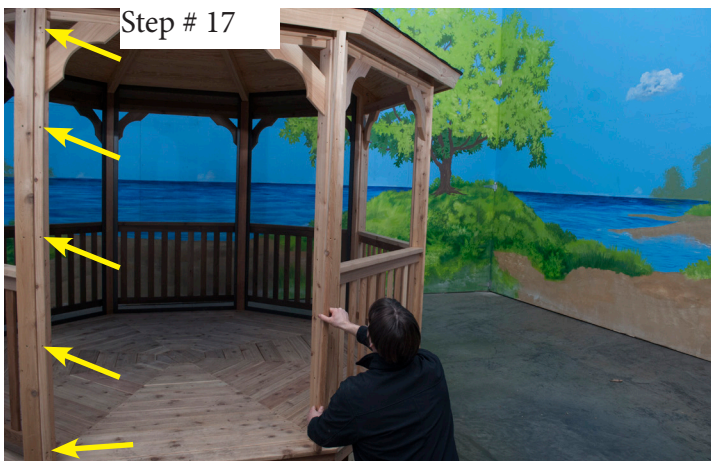
Place on the corner of the post.

Step # 16



Fasten to post with 2 1/2" Screw through pre-drilled holes.

Step # 17



Five (5) 2 1/2" Screw locations.

Step # 18



Install the Side Piece for Door Frame on the opposite side, as shown in steps 14-17.



Step # 19



Install the Top Piece for Door Frame.

Step # 20



Fasten with one (1) 2 ½" Screw into each pre-drilled hole.

Step # 21



Three (3) Screw locations.

Step # 22



Locate the Top Z Bar. Push up against the Door Frame.

Step # 23



Fasten the Top Z Bar to the Door Frame with three (3) 1" Bronze Screws.

Step # 24



Three (3) Screw locations.



Step # 25



Locate the Side Z Bars.

Step # 26



Push against the Door Frame. Fasten Side Z Bar to Door Frame with 1" Bronze Screws.

Step # 27



Four (4) Screw locations

Step # 28



Install the Side Z Bar on the opposite side of the door way.

Step # 29



Locate the Piano Hinge.

Step # 30



Place on the Side Z Bar.

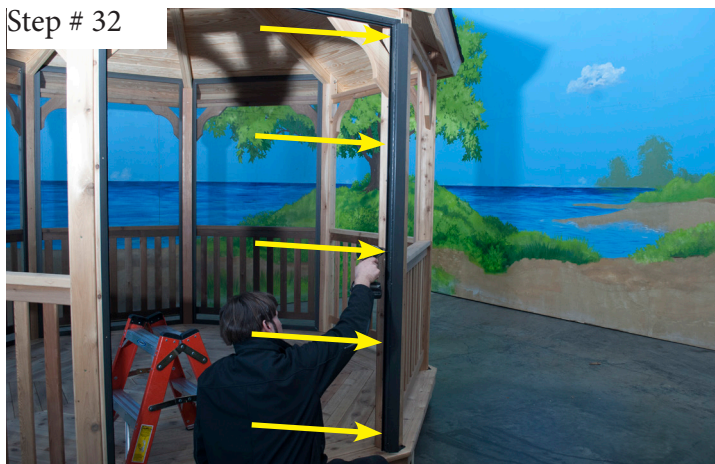


Step # 31



Fasten Piano Hinge to Z Bar with 1" Bronze Screws.

Step # 32



Five (5) Screw locations.

Step # 33



Locate the Screen Door.

Step # 34



Slide the Screen Door into the Piano Hinge.

Step # 35



After the Screen Door is in the Piano Hinge, carefully close the door. Center and Square the Screen Door.

Step # 36



Create an equal gap all the way around the Screen Door.



Step # 37



While holding the Screen Door in place, fasten the Screen Door with ½” Bronze Screws through the Piano Hinge.

Step # 38



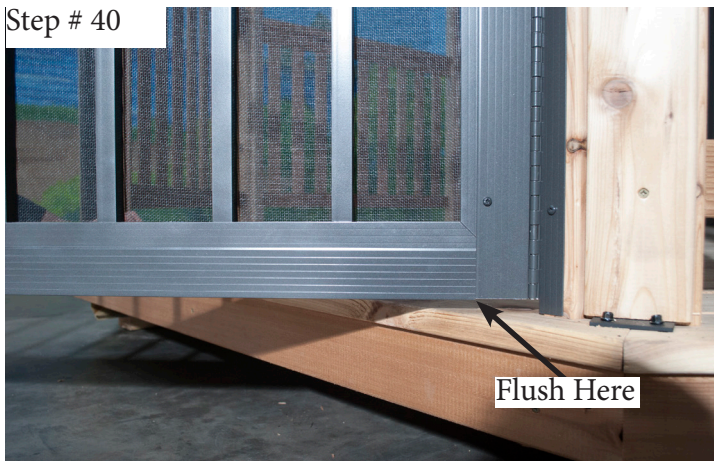
Five (5) Screw locations.

Step # 39



Locate the Bug Sweep Holder. Slide the Bug Sweep Holder up into the Screen Door.

Step # 40



Install the Bug Sweep Holder flush with the bottom of the Screen Door.

Step # 41



Fasten the Bug Sweep Holder to the Screen Door with ½” Bronze Screws.

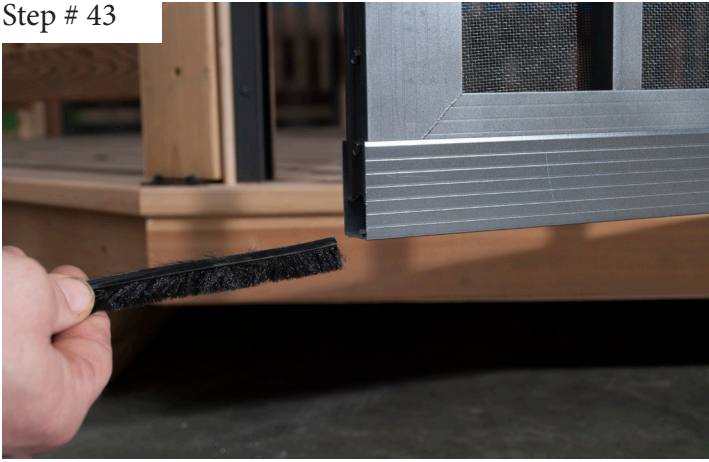
Step # 42



Three (3) Screw Locations.



Step # 43



Locate the Bug Sweep.

Step # 44



Slide the Bug Sweep into the Bug Sweep Holder.

Step # 45



Slide all the way across the bottom.

You are now ready to install the Door Latch. Follow the instructions included in the Door Latch Box.



Enjoy your Gazebo!