



YardCraft

by Lapp Structures

rediscover life outdoors



3x4 Backyard Chicken Coop

Assembly Instructions

866-210-9273
info@yardcraft.com





Thank you for the purchase of this “easy to assemble” Chicken Coop. This manual is designed to help simplify the assembly process with step by step instructions and photos. **Please read through the entire manual before starting!**

The building put together for this manual is a 3’x4’ Chicken Coop and has a recommended capacity for 3 chickens. It took 2 men approximately 30 minutes to unpack & assemble this kit, using the tools shown below. However; you may want to figure more time than that, since this is probably a new project for you.

In addition to the materials provided you will need approximately (2) quarts of paint for the Smart-Panel siding, and (1) pint for the trim if a different color is desired for that.

Take a deep breath and get at it; the satisfaction and enjoyment of this completed Chicken Coop awaits you! Have Fun!

NOTE:

You have purchased a product that consists of multiple pieces. With your purchase, you assume full responsibility to provide the necessary manpower and/or equipment to unload the items. You also agree that any damage that happens to the equipment, product, or individuals during the entire construction process, is your responsibility, and neither the seller, nor the manufacturer will be held liable for any such damage.

Tools Required For Job:

- Hammer
- Screw Gun

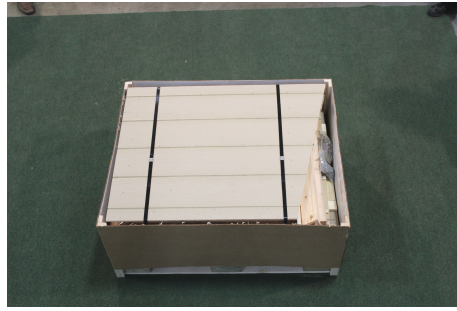
Recommended Safety Items:

- Safety Glasses
- Protective Gloves

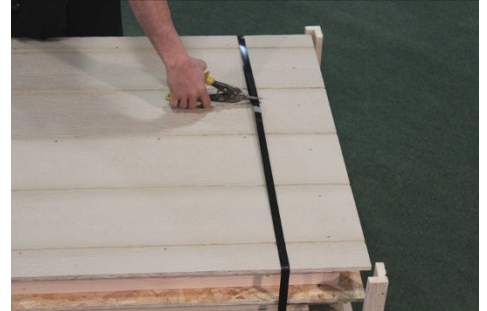
Unpacking The Kit



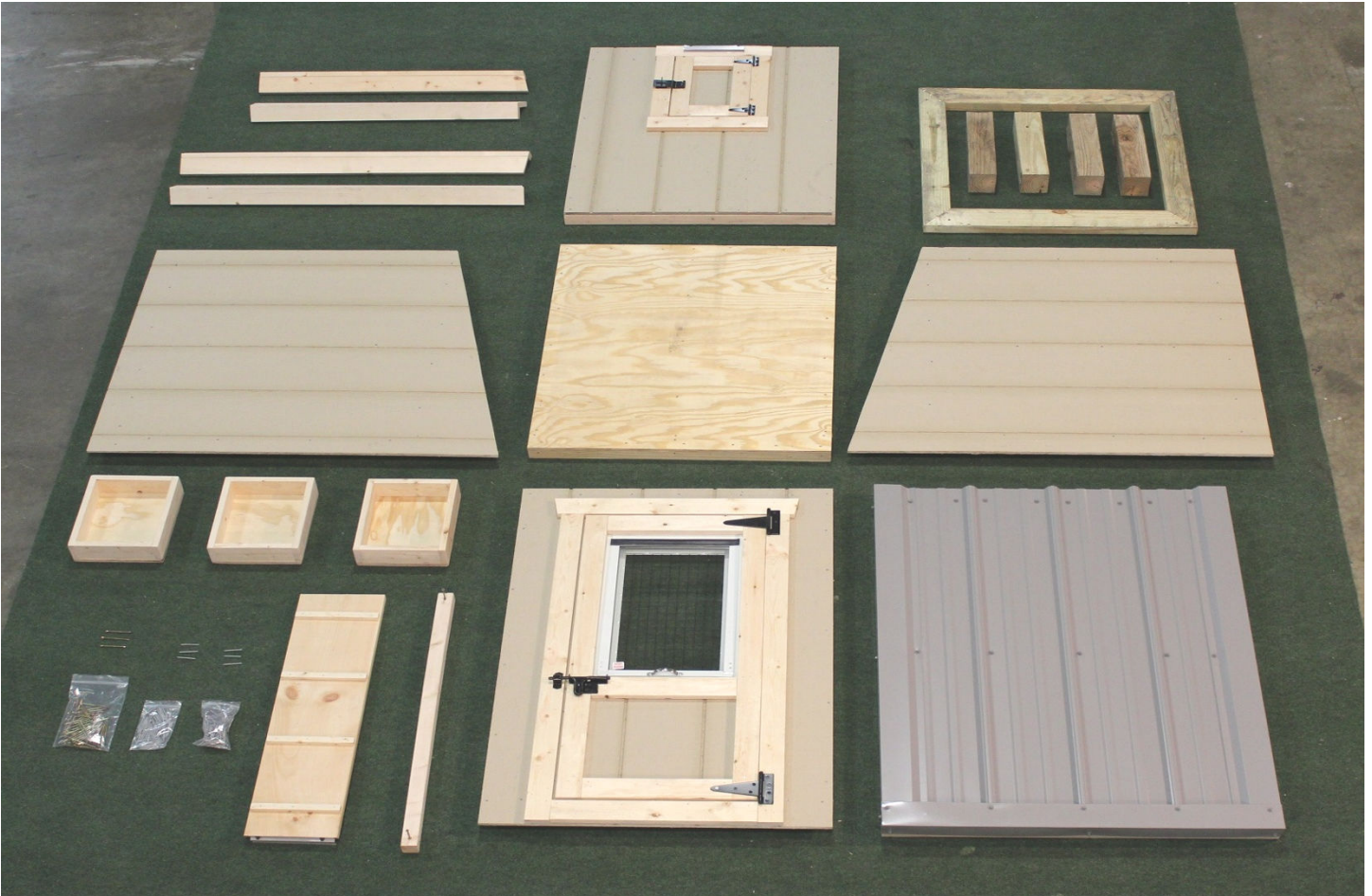
(1) Place the package as close to the assembly location as possible.
NOTE: If possible, assemble the kit on a level surface for an easier setup process.



(2) Remove the top & side covers.



(3) Cut both packaging bands.



(4) Unpack the items & organize as desired. See next page for layer by layer unpacking assistance.

Layer by Layer Unpacking Photos



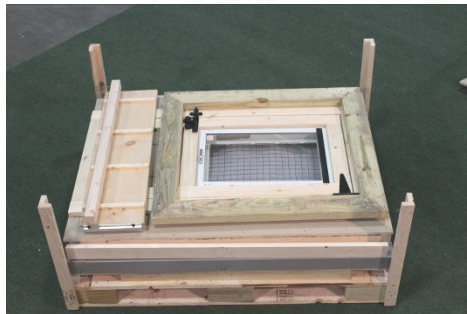
(5) Top - Layer #8



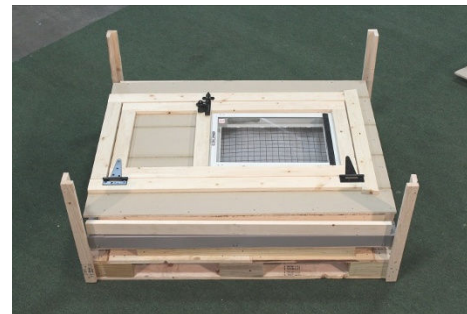
(6) Layer #7



(7) Layer #6



(8) Layer #5



(9) Layer #4



(10) Layer #3



(11) Layer #2

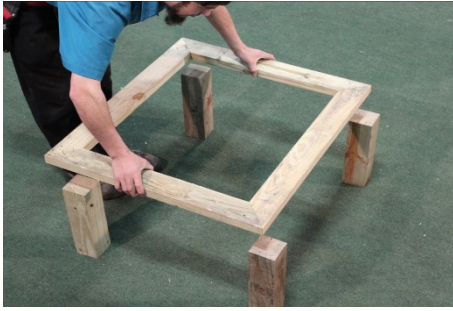


(12) Layer #1

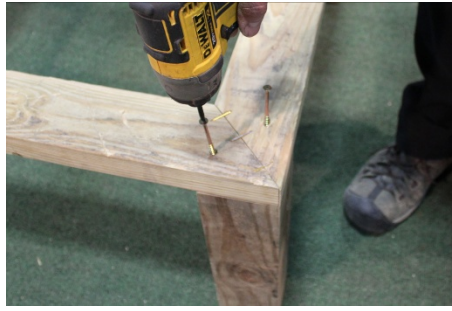


(13) Pallet - Layer #0

Assemble Floor



(14) Position the 4x4 posts, using the 2x4 base as a placement guide, then place the 2x4 base on the supports posts as shown.



(15) After making sure the support posts are flush with the 2x4 base, fasten each corner, using (4) 3" screws (per corner)



(16) Repeat for the other 3 corners before moving to next step.



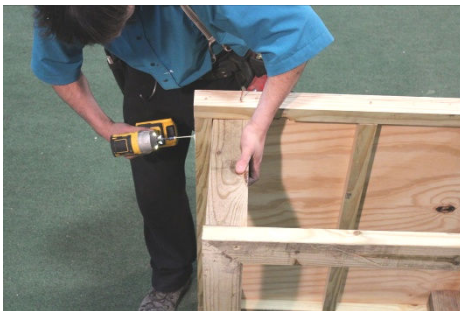
(17) Flip the assembled base around as shown.



(18) Place the floor unit over the 4x4 support posts, making sure that the floor framing is placed outside of the 4x4 support posts, as shown in the next step.



(19) Example!



(20) Fasten both corners of the floor section to the 4x4 posts, using (2) 3" screws per corner.

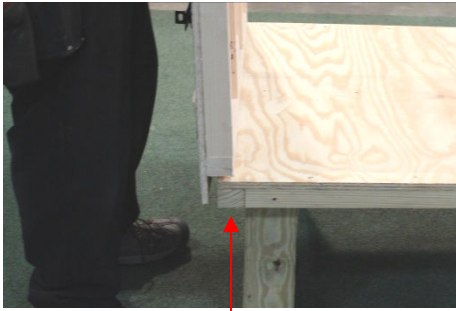


(21) Repeat for the rest of the corners.



(22) Locate the back wall (as shown) and position it correctly, making sure the wall is down & in against the floor, as well as flush on both ends.

Assemble Walls



(23) **Incorrect!** Wall needs to be in and down against the floor.



(24) Once the wall is placed correctly, fasten it to the floor as shown, using a total of (4) 2" siding nails.



(25) Locate and position the left wall section, making sure you have the correct wall. Low end should align with the back wall. **See example!**



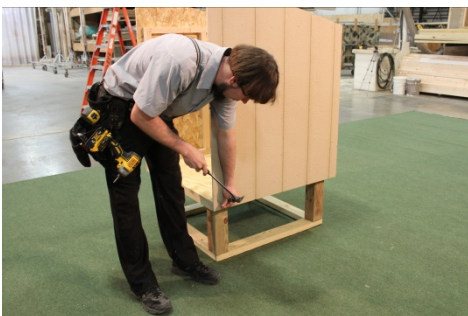
(26) Fasten the bottom of the wall, using the same method as was shown for the back wall.



(27) Now, fasten the corner of the wall, using (3) 2" nails, and making sure the corner framing is flush with back wall.



(28) Repeat previous steps for right wall.



(29) Fasten the wall securely before moving to next step.



(30) Insert the front wall in between the left and right wall, then fasten the bottom, as well as both corners, as done in previous steps.



(31) Fasten wall securely before moving to next step.

Roof / Trim / Misc.



(32) Locate the roof section, and position it as shown.



(33) **INCORRECT!** Reverse position of roof, as shown in previous step.



(34) Fasten roof to back wall as shown, using 3" screws.



(35) Now, toe-screw high side of roof to front wall, using 3" screws.



(36) Place the corner trim in the correct locations. (Front & back sides both have a left & right) (Position angle cut towards roof-line) Then; fasten the corner trim, using (3) 2" trim nails on each side of corner trim.



(37) Repeat for the rest of the corners, again; making sure the angle follows the roofline.



(38) Now; locate the ramp, and clip it onto the included bracket.



(39) Example!



(40) Locate the roosting bar, then offset it approximately 16" up from floor, and fasten to wall using (1) 3" screw.



(41) Fasten opposite side of roosting bar, again using (1) 3" screw.



(42) Locate the (3) laying boxes, & place them in the position of your choice. **Nesting Box Position #1**



(43) **Nesting Box Position #2**



**Congratulations, the unit is complete,
and ready for painting!**

NOTE: Paint is not provided!